



**REGIONAL SPECIALISED METEOROLOGICAL CENTRE-TROPICAL CYCLONES, NEW DELHI
TROPICAL WEATHER OUTLOOK**

DEMS-RSMC TROPICAL CYCLONES NEW DELHI DATED 21.08.2024

TROPICAL WEATHER OUTLOOK FOR NORTH INDIAN OCEAN (THE BAY OF BENGAL AND THE ARABIAN SEA) VALID FOR NEXT 168 HOURS ISSUED AT 0600 UTC OF 21.08.2024 BASED ON 0300 UTC OF 21.08.2024.

BAY OF BENGAL:

YESTERDAY'S LOW PRESSURE AREA OVER CENTRAL PARTS OF BANGLADESH & NEIGHBOURHOOD LAY OVER NORTH BANGLADESH & NEIGHBOURHOOD AT 0300 UTC OF TODAY, THE 21ST AUGUST 2024. THE ASSOCIATED CYCLONIC CIRCULATION EXTENDED UPTO 9.6 KM ABOVE MEAN SEA LEVEL. IT IS LIKELY TO MOVE NEARLY WESTWARDS ACROSS WEST BENGAL DURING NEXT 48-HOURS.

SCATTERED LOW & MEDIUM CLOUDS WITH EMBEDDED INTENSE TO VERY INTENSE CONVECTION LAY OVER EXTREME NORTH BAY OF BENGAL. SCATTERED LOW & MEDIUM CLOUDS WITH EMBEDDED MODERATE TO INTENSE CONVECTION LAY OVER REST BAY OF BENGAL, ARAKAN COAST, GULF OF MARTABAN & TENASSERIM COAST AND ANDAMAN SEA.

***PROBABILITY OF CYCLOGENESIS (FORMATION OF DEPRESSION) DURING NEXT 168 HRS:**

24 HOURS	24-48 HOURS	48-72 HOURS	72-96 HOURS	96-120 HOURS	120-144 HOURS	144-168 HOURS
NIL	NIL	NIL	NIL	NIL	NIL	NIL

***NOTE: EVERY 24HR FORECAST IS VALID UPTO 0300 UTC (0830 IST) OF NEXT DAY**

ARABIAN SEA:

YESDERDAY'S CYCLONIC CIRCULATION OVER SOUTHEAST ARABIAN SEA & ADJOINING LAKSHADWEEP AREA LAY OVER LAKSHADWEEP & NEIGHBOURHOOD EXTENDED UPTO 5.8 KM ABOVE MEAN SEA LEVEL TILTING SOUTHWESTWARDS WITH HEIGHT AT 0300 UTC OF TODAY, THE 21ST AUGUST 2024.

A FRESH CYCLONIC CIRCULATION FORMED OVER NORTHEAST ARABIAN SEA & ADJOINING GUJARAT EXTENDED BETWEEN 4.5 AND 5.8 KM ABOVE MEAN SEA LEVEL AT 0300 UTC OF TODAY, THE 21ST AUGUST 2024.

SCATTERED LOW & MEDIUM CLOUDS WITH EMBEDDED INTENSE TO VERY INTENSE CONVECTION LAY OVER EASTCENTRAL & SOUTHEAST ARABIAN SEA, LAKSHADWEEP ISLANDS, MALDIVES & COMORIN AREA. SCATTERED LOW & MEDIUM CLOUDS WITH EMBEDDED MODERATE TO INTENSE CONVECTION LAY OVER WESTCENTRAL &

Cloud distribution: (a) Isolated: <25%, Scattered:25-50%, Broken: 51-75%, Solid:>75%, Convection Intensity: (a) Weak: Cloud Top Temperature (CTT) >-25°C, (b) Moderate: CTT: - 25°C to -40°C, (c) Intense: CTT: - 41°C to -70°C and (d) Very Intense: : Less than -70°C
PROBABILITY OF CYCLOGENESIS (FORMATION OF DEPRESSION):NIL: 0%, LOW: 1-33%, , MODERATE: 34-66% AND HIGH: 67-100%
This is a guidance Bulletin for WMO/ESCAP Panel Member countries. Visit respective National websites for Country specific Bulletins

SOUTHWEST ARABIAN SEA AND WEAK TO MODERATE CONVECTION LAY OVER GULF OF CAMBAY.

***PROBABILITY OF CYCLOGENESIS (FORMATION OF DEPRESSION) DURING NEXT 168 HRS:**

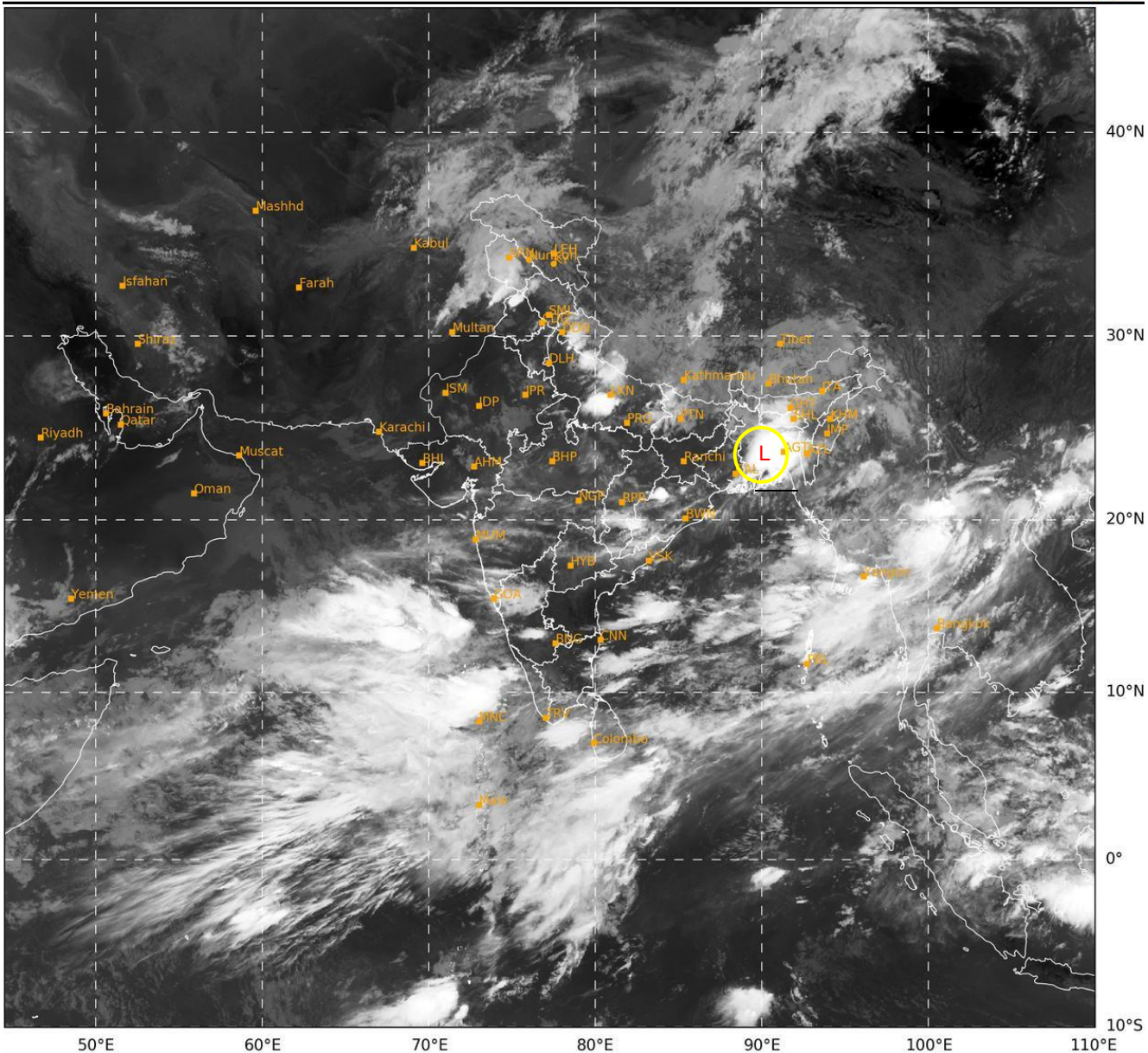
24 HOURS	24-48 HOURS	48-72 HOURS	72-96 HOURS	96-120 HOURS	120-144 HOURS	144-168 HOURS
NIL	NIL	NIL	NIL	NIL	NIL	NIL

***NOTE: EVERY 24HR FORECAST IS VALID UPTO 0300 UTC (0830 IST) OF NEXT DAY**

REMARKS: NIL

SAT : INSAT-3DR IMG
 IMG_TIR1 10.8 um
 LIC Mercator

21-08-2024/(0245 to 0312) GMT
 21-08-2024/(0815 to 0842) IST



428 936 IMD,DELHI

Cloud Distribution Probability: Scattered:25-50%, Broken: 51-75%, Solid:>75%, Convection Intensity: (a) Weak: Cloud Top Temperature (CTT) >-25°C, (b) Moderate: CTT: - 25°C to -40°C, (c) Intense: CTT: - 41°C to -70°C and (d) Very Intense: : Less than -70°C
 PROBABILITY OF CYCLOGENESIS (FORMATION OF DEPRESSION):NIL: 0%, LOW: 1-33%, , MODERATE: 34-66% AND HIGH: 67-100%
 This is a guidance Bulletin for WMO/ESCAP Panel Member countries. Visit respective National websites for Country specific Bulletins